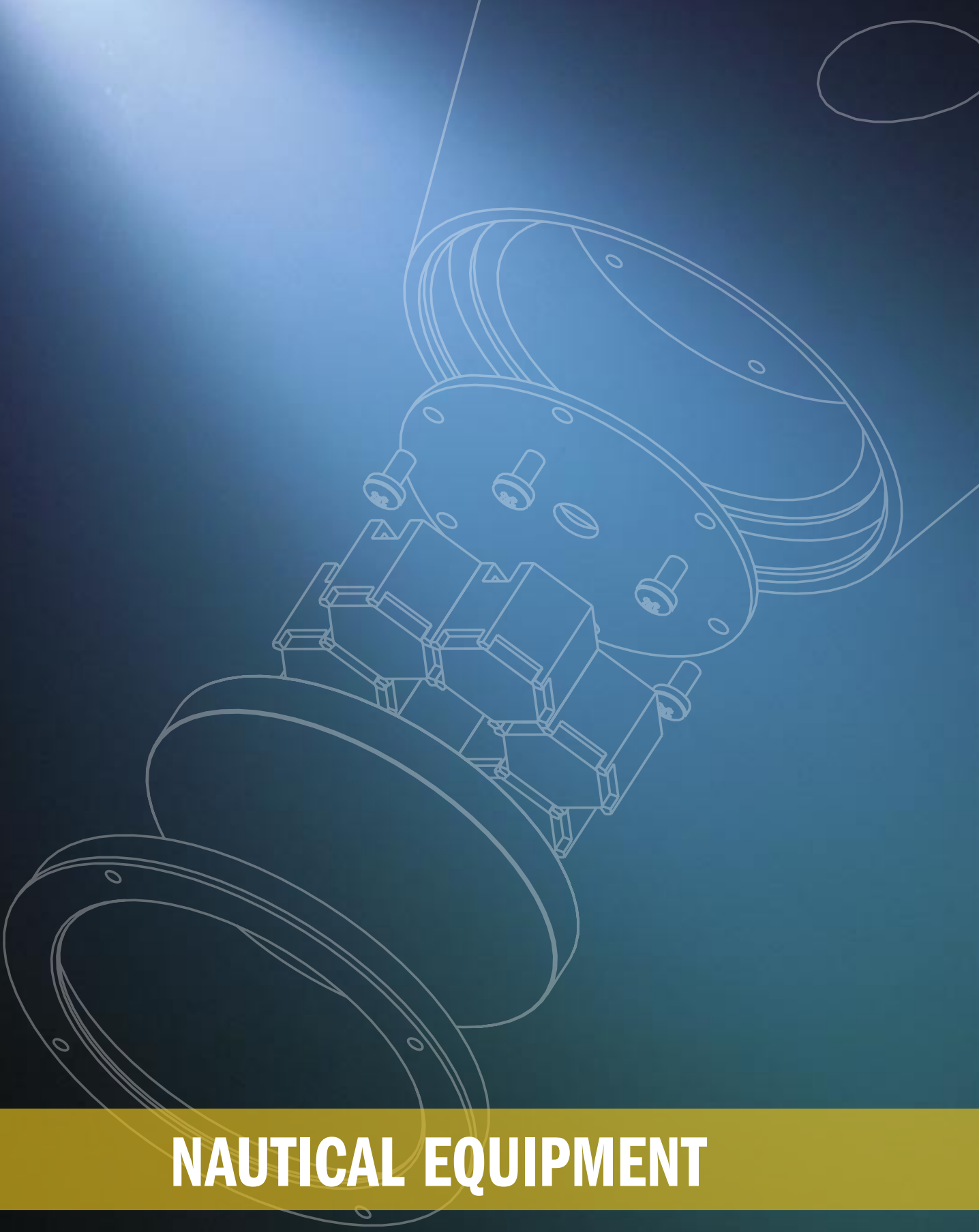


ASTEL MARINE



NAUTICAL EQUIPMENT

WIRELESS YACHT CONTROL

The MYW868 series RF microprocessor-based high-reliable wireless remote control systems for motor yachts are designed especially for controlling engines, thrusters and anchor windlass. By using the remote control device MYW868C(G) the skipper has control over his vessel from any spot on the yacht. High-quality switches and keys are used to control both engines, the bow and the stern thrusters as well as the anchor windlass during anchoring. The remote control unit MYW868C(G) is encased in an ergonomically designed watertight housing ensuring simple operation and portability. Thanks to the carrying cord provided it can even be worn around the neck thus freeing the hands for other tasks during docking. The steering of the vessel is thus always at the skipper's fingertips in case of any corrections of the vessel's movement due to wind or other factors are required.

During anchoring, complete control of the vessel is possible from the bow which allows the skipper to precisely determine the position of the anchor and avoid any underwater obstacles. During the weighing of the anchor, proper manoeuvring of the vessel is possible right from its bow, thus avoiding any overloads on the anchor windlass and possible entanglement with another anchor.

Dangerous and unforeseeable situations, due to incorrect instructions from crew members, are thus effectively eliminated also during the procedure of tying a line onto a floating buoy. Thanks to MYW868C(G), the skipper can manoeuvre the vessel to the buoy with pinpoint accuracy and secure the line without any assistance.

This remote control device comes in three basic versions, every version is available with one model of transmitters, MYW868C or MYW868CG.

An additional control unit, MYW868BE, can also be supplied to use the system with special electronic engine controls or for secondary engine controls if the yacht is fitted with a fly-bridge.



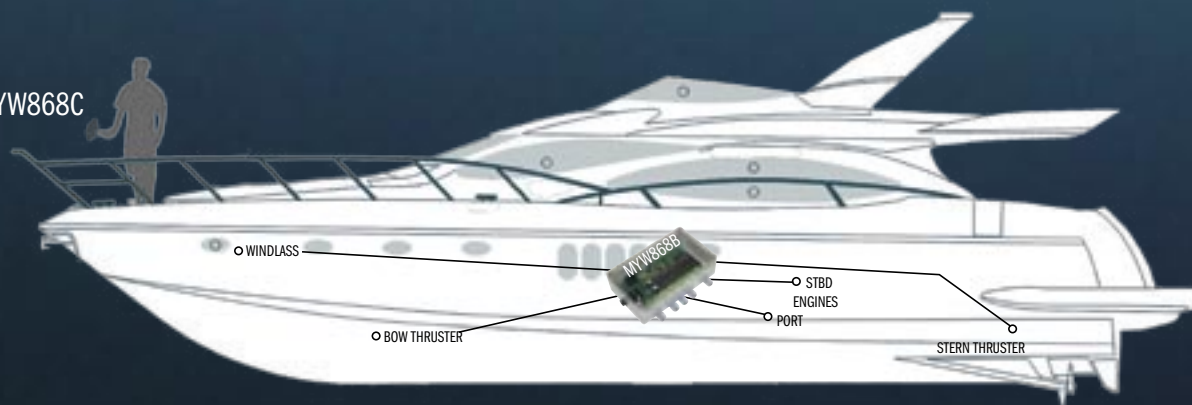
MYW868C-5



MYW868CG-5

- High-Reliability Patented Design
- Port Engine Control
- Starboard Engine Control
- Anchor Windlass Control
- Bow Thruster Control
- Stern Thruster Control
- Transmit LED Indicator
- Low Battery LED Indicator
- ABS Casing with IP41/IP65 Protection
- Low-Power Consumption
- Simple Connecting

MYW868C



When landing becomes a pleasure...

UNDERWATER LIGHTING

The underwater lights are available in CONUS, CONVEX and PLAQUE series and are designed to use the latest LED lighting technology.

The CONUS series slope-truncated cone designed underwater lights using high-power LEDs can be installed under water line on the stern of the hull of the yacht. By the help of slope-truncated cone designed casing the CONUS can be installed on the hull to light in different directions. Standard underwater lights installed on the stern of the hull light only backwards. As stern platform is usually out of the water the installations of standard underwater lights under the platform to light to the sea ground are not possible because of reflections from the water line resulting in a poor effect of lighting. But the CONUS can be positioned to light to the sea ground that can be very welcome when anchoring and docking in clear and low waters of the Adriatic, Mediterranean and other seas. Even with the installation on the stern of the hull and by using more units, the angle of lighting can be very large, up to 140 degrees. By the help of slope-truncated cone designed casing there is no need to install the standard underwater lights on both sides of the hull close to the stern as the mentioned installation requests a special hull design. The CONUS can be positioned to lights to the both sides of the yacht and the problem of side-mounted standard underwater lights should be solved that can be specially critical at fast motor yachts because of high water resistance at high speed resulting in possible changes in yacht performance.

The CONVEX series underwater LED lights are designed for standard surface-mount or thru-hull installation on the stern of the hull. The surface-mount and thru-hull designed casings enable very simple installation on the hull under water line with only few screws and without making any bigger holes through the hull under water line.

The PLAQUE series underwater LED lights are designed for flush-mount installation where the most important are low-profile casings to avoid high water resistance and quality materials to assure very reliability installation and operation.

All the models are available in aluminium bronze casings but most of them are available also in anodized aluminium casings in different colors. The lighting are available in white, blue and green colors. All the models are available with 6 or 18 power LEDs and suitable power supply units.

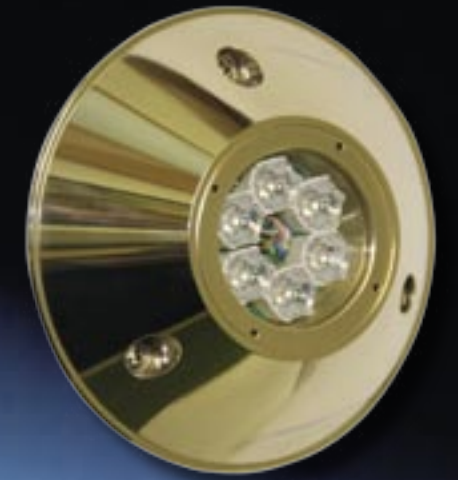
- Innovative and Patented Design
- Aluminium Bronze or Anodized Aluminium Casings
- 6 or 18 Power LEDs Design
- White, Blue or Green Lighting
- Tempered Glass Optical Window
- High-Efficiency Lens
- Low Power Consumption
- Simple Installation



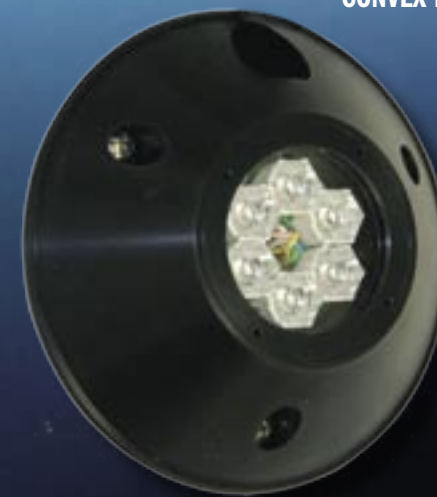
CONUS MSR0680



CONVEX MTH0680



CONVEX MSR0680



CONVEX MST0680



CONVEX MSR18240



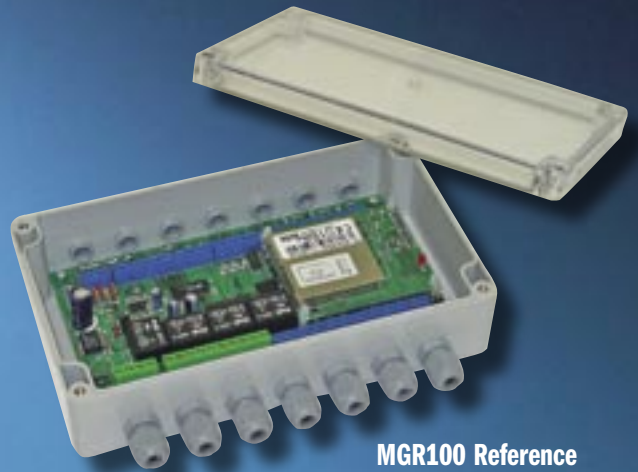
GSM ALARM AND REMOTE CONTROL

The MGR100 series high-efficient GSM remote controllers are specially designed to use in nautical applications. The built-in GSM module with different interfaces enable simple and easy control and management of complete yacht electrical and electronic equipment through GSM mobile phone. Alarm inputs enable intruder, fire and water income alarming and voltage and temperature alarming and measuring, etc. The built-in relays enable the remote control of different yacht devices. The built-in GPS receiver enable the position tracking and alarming in the case of leaving or approaching to the hold position.

The control of the unit is possible by the help of SMS text messages or by the help of tone (DTMF) dialing. Alarming is possible by receiving the SMS text messages or by alarm calls or by the combination of both of them. Interactive voice responder confirms the requests during DTMF control or inform about the kind of alarm when alarm occurs. The unit enables also speaker and microphone connection to remote communication. Programming is possible by the help of SMS text messages or with PC by the help of RS-232 serial interface.

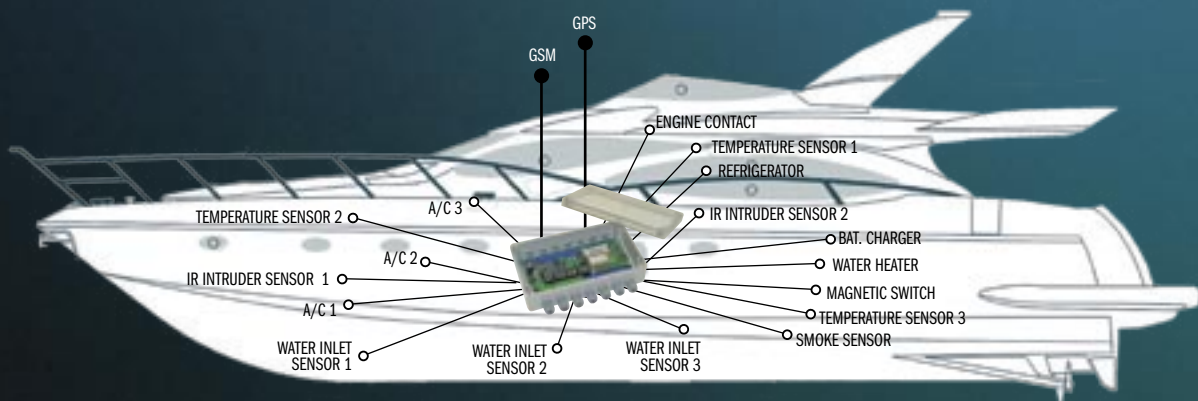
By the help of wireless sensors and wireless keyfob transmitter the installation, control and management become more simple and user-friendly.

This GSM remote control units come in three versions, Basic, Advance and Reference, every model is available with GPS receiver.



MGR100 Reference

- Built-In GSM Module with SIM Interface
- Built-In GPS Module for Location Management and Alarming
- SMS Control
- DTMF (PSTN, ISDN, GSM) Control
- IVR (Interactive Voice Responder)
- Temperature Measuring and Management
- Analog Voltage Measuring and Management
- Alarm Sensors Management
- Wireless Sensors Connection Capability
- Remote Keyboard Interface
- Speaker and Microphone Interface
- PC Remote and Local Management
- Wide Range Power Supply
- Rechargeable Battery Connection
- ABS Casing





The company ASTEL d.o.o. was established in 1991 and has been one of the leading European manufacturers of video surveillance equipment for over a decade. Experience in the field of security systems led to the development and production of electronic marine equipment that provides a high level of safety and dependability of operation.

ASTEL
MARINE

ASTEL d.o.o., Dutovlje 138, 6221 Dutovlje, Slovenia

Tel: +386 5 7310771, +386 5 7310772

Fax: +386 5 7310789

E-mail: info@astel-marine.com

Web: www.astel-marine.com