



Nautical Equipment
2024

Simply the brightest.



The company ASTEL d.o.o. was established in 1991 and has been one of the leading European manufacturers of video surveillance equipment for over a decade. Experiences in the field of security and GSM alarm systems led to the development and production of electronic marine equipment that provides a high level of safety and dependability of operation.

The ASTEL MARINE brand name was launched in 2004 and very soon it has become one of leading brand name in marine industry.

"We strive for technical perfection in all of our products, and the key directions of our company have always been innovation and distinctiveness. The wide range of our marine and architectural fittings are of the highest possible quality made from carefully selected components and professional solid materials."

Our Story



INTERIOR & EXTERIOR LED LIGHTS

INTENSA MRM0110	9
INTENSA MRM0115	11
INTENSA MRM0220	11
INTENSA MRM0620	11
INTENSA MRM0230	13
INTENSA MRM0340	13
INTENSA MRM0380	13
INTENSA MRM0625	13
ASTRA MSM0115	15
ASTRA MSM0320	15
ASTRA MSM0650	15
ARCUS MRM01	17

SUPERYACHT INTERIOR LED LIGHTS

SPEIRA MQWAVE01	21
LAENA MQMURO01	23

UNDERWATER LED LIGHTS

EQUATOR MSR0640	27
EQUATOR MSR1280	29
EQUATOR MSR36240	31
CONUS MST0680	33
CONUS MST18240	33
CONUS MSR0680	35
CONUS MSR18240	35
CONVEX MST0680	37
CONVEX MST18240	37
CONVEX MSR0680	39

CONVEX MSR18240	39
PLAQUE MFM0680	41
PLAQUE MFM18240	41

SUPERYACHT UNDERWATER LED LIGHTS

EQUATOR MSR36240P	45
EQUATOR MSR36240S	45
CONVEX MTH18240S	47
CONVEX MSR18240S	47
CONVEX MSR09200	49
CONVEX MSR18300	49
PLAQUE MFM18240S	51
PLAQUE MFM09200	52
PLAQUE MFM18300	52

UNDERWATER LED DOCK LIGHTS

CONVEX MST18240 AB2WD	57
CONVEX MSR18240 AB2WD	57

WIRELESS YACHT CONTROL SYSTEMS

MYW868B/CP	61
------------	----

ACCESSORIES

Synchronization Unit MSU08	65
PWM Dimmer MDU13	65
DMX512 Interface MXU01	67
Isolation Board IB01	67
Cofferdam CD01	67

Due to continuous product improvement all specifications and design are subject to change without notice.

Table Of Contents



INTENSA

INTENSA MRM0110
INTENSA MRM0115
INTENSA MRM0220
INTENSA MRM0620
INTENSA MRM0230
INTENSA MRM0340
INTENSA MRM0380
INTENSA MRM0625

ASTRA

ASTRA MSM0115
ASTRA MSM0320
ASTRA MSM0650

ARCUS

ARCUS MRM01

Interior & Exterior LED Lights

INTENSA

Compact LED light with electronic driver built-in waterproof anodized aluminium casing designed by using 1 high-power LED or LED array with built-in microprocessor which enables network connections and remote control with digital dimming.

Multi-color RGBW models offer the best illumination quality of different white lighting and microprocessorcontrolled changing of white and all other colors of lighting manually or automatically through the complete rainbow spectrum. The light is designed to adjust the requested white lighting in 21 steps.

Built-in ASTEL protocol enables complete lighting control by using optional DMX512 interface MXU01.

Advanced optical system with reflector and holographic diffuser allows perfect light spread with different color temperature options for interior and exterior.

Due to wide range of prestige massive face shapes made of aluminium or stainless steel the INTENSA is suitable to fit on both luxury yachts and superyachts.

All models are designed for operating at extreme temperature and voltage conditions with thermal, transient and reverse polarity protections.

Features

- Innovative Design
- Anodized Aluminium Casings
- 1 High-Power LED or LED Array Design
- Different Face Shapes and Finishes
- White, Blue, Green, Red or RGBW Multi-Color Lighting
- Reflector with Holographic Diffuser
- Microprocessor Control
- Digital Dimming
- DMX512 Network Control
- Polarity Protection
- Transient Protection
- Thermal Protection
- Wide Range Power Supply



Simply
the brightest.



Color of lighting

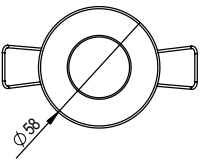
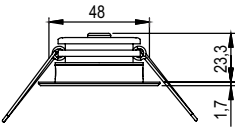
W	■ warm white
D	■ daylight white
B	■ blue
G	■ green
R	■ red
M	■ ■ ■ ■ RGBW multi-color

Control

I	internal dimming control, 2-wire system
E	external dimming control, 3-wire system

INTENSA MRM0110

Power supply	12 – 24 Vdc, max. 130 mA
Lens angle	130°
Optical window	High Grade Polycarbonate Glass
Luminous flux	max. 150 lm (daylight white)
White color temperature	4500K (daylight) or 3000K (warm)
Casing	Black anodized aluminium
Protection	IP 65
Dimensions	max. Ø58 x 25 mm
Mounting hole	Ø48mm x 24mm
Weight	Aluminium front shape 70g Stainless steel front shape 100g



Front shape

MAW	round, modern, painted white aluminium
MAB	round, modern, painted beige aluminium
MSP	round, modern, polished stainless steel
MSG	round, modern, polished gold (PVD) stainless steel
MSS	round, modern, satin stainless steel
QMAW	square, modern, painted white aluminium
QMAB	square, modern, painted beige aluminium
QMSP	square, modern, polished stainless steel
QMSG	square, modern, polished gold (PVD) stainless steel
QMSS	square, modern, satin stainless steel

INTENSA

Compact LED light with electronic driver built-in waterproof anodized aluminium casing designed by using 1, 2 or 6 high-power LEDs with built-in microprocessor which enables network connections and remote control with digital dimming.

Multi-color RGBW models offer the best illumination quality of different white lighting and microprocessorcontrolled changing of white and all other colors of lighting manually or automatically through the complete rainbow spectrum. The light is designed to adjust the requested white lighting in 21 steps.

Built-in ASTEL protocol enables complete lighting control by using optional DMX512 interface MXU01.

Advanced optical system with reflector and holographic diffuser allows perfect light spread with different color temperature options for interior and exterior.

Due to wide range of prestige massive face shapes made of aluminium or stainless steel the INTENSA is suitable to fit on both luxury yachts and superyachts.

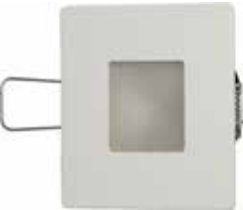
All models are designed for operating at extreme temperature and voltage conditions with thermal, transient and reverse polarity protections.

Features

- Innovative Design
- Anodized Aluminium Casings
- 1, 2 or 6 High-Power LEDs Design
- Different Face Shapes and Finishes
- White, Blue, Green, Red or RGBW Multi-Color Lighting
- Reflector with Holographic Diffuser
- Microprocessor Control
- Digital Dimming
- DMX512 Network Control
- Polarity Protection
- Transient Protection
- Thermal Protection
- Wide Range Power Supply
- Low Power Consumption
- Simple Installation

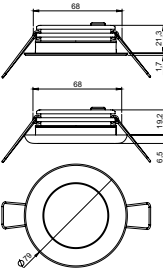


Simply
the brightest.



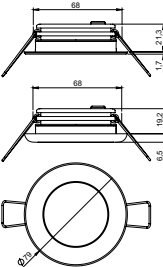
INTENSA MRM0115

Power Supply	12-24 Vdc, max. 250 mA/12 Vdc or 125 mA/24 Vdc
Reflector angle	130°
Optical window	High-grade polycarbonate glass
Luminous flux	max. 270 lm (daylight white)
White color temperature	4500K (daylight) or 3000K (warm)
Casing	Black anodized aluminium
Protection	IP 65
Dimensions	Ø79mm x 26mm (C) or Ø79mm x 23mm (M)
Mounting hole	Ø68mm x 20mm (C) or Ø68mm x 22mm (M)
Weight	Aluminium front shape 145g (C) or 125g (M) Stainless steel front shape 225g (C) or 160g (M)



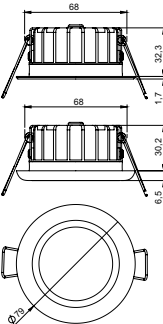
INTENSA MRM0220

Power supply	12-24 Vdc, max. 400 mA/12 Vdc or 200 mA/24 Vdc
Reflector angle	130°
Optical window	High-grade polycarbonate glass
Luminous flux	max. 450 lm (daylight white)
White color temperature	4500K (daylight) or 3000K (warm)
Casing	Black anodized aluminium
Protection	IP 65
Dimensions	Ø79mm x 26mm (C) or Ø79mm x 23mm (M)
Mounting hole	Ø68mm x 20mm (C) or Ø68mm x 22mm (M)
Weight	Aluminium front shape 145g (C) or 125g (M) Stainless steel front shape 225g (C) or 160g (M)



INTENSA MRM0620

Power supply	12-24 Vdc, max 650 mA/12 Vdc or 350 mA/24 Vdc
Reflector angle	120°
Optical window	High-grade polycarbonate glass
Luminous flux	max. 550 lm
White color temperature	Adjustable, from 2500K to 7500K in 21 steps
Casing	Black anodized aluminium
Protection	IP 65
Dimensions	Ø79mm x 37mm (C) or Ø79mm x 34mm (M)
Mounting hole	Ø68mm x 31mm (C) or Ø68mm x 33mm (M)
Weight	Aluminium front shape 145g (C) or 125g (M) Stainless steel front shape 225g (C) or 160g (M)



Color of lighting

MRM0115 and MRM0220

W	■ warm white
D	■ daylight white
B	■ blue
G	■ green
R	■ red

MRM0620

M	■ ■ ■ ■ RGBW multi-color
---	--------------------------

Control

I	internal dimming control, 2-wire system
E	external dimming control, 3-wire system

Front shape

CAW	round, classic, painted white aluminium
CAB	round, classic, painted beige aluminium
CSP	round, classic, polished stainless steel
CSG	round, classic, polished gold (PVD) stainless steel
CSS	round, classic, satin stainless steel
MAW	round, modern, painted white aluminium
MAB	round, modern, painted beige aluminium
MSP	round, modern, polished stainless steel
MSG	round, modern, polished gold (PVD) stainless steel
MSS	round, modern, satin stainless steel
QMAW	square, modern, painted white aluminium
QMAB	square, modern, painted beige aluminium
QMSP	square, modern, polished stainless steel
QMSG	square, modern, polished gold (PVD) stainless steel
QMSS	square, modern, satin stainless steel

INTENSA

Compact LED light with electronic driver built-in waterproof anodized aluminium casing designed by using 2, 3 or 6 high-power LEDs with built-in microprocessor which enables network connections and remote control with digital dimming.

Multi-color RGBW models offer the best illumination quality of different white lighting and microprocessorcontrolled changing of white and all other colors of lighting manually or automatically through the complete rainbow spectrum. The light is designed to adjust the requested white lighting in 21 steps.

Built-in ASTEL protocol enables complete lighting control by using optional DMX512 interface MXU01.

Advanced optical system with reflector and holographic diffuser allows perfect light spread with different color temperature options for interior and exterior.

Due to wide range of prestige massive face shapes made of aluminium or stainless steel the INTENSA is suitable to fit on both luxury yachts and superyachts.

All models are designed for operating at extreme temperature and voltage conditions with thermal, transient and reverse polarity protections.

Features

- Innovative Design
- Anodized Aluminium Casings
- 2, 3 or 6 High-Power LEDs Design
- Different Face Shapes and Finishes
- White, Blue, Green, Red or RGBW Multi-Color Lighting
- Reflector with Holographic Diffuser
- Microprocessor Control
- Digital Dimming
- DMX512 Network Control
- Polarity Protection
- Transient Protection
- Thermal Protection
- Wide Range Power Supply
- Low Power Consumption
- Simple Installation



Simply
the brightest.



Color of lighting

MRM0230 and MRM0340

W	■ warm white
D	■ daylight white
B	■ blue
G	■ green
R	■ red

MRM0380

W	■ warm white
D	■ daylight white

MRM0625

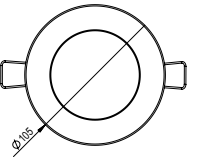
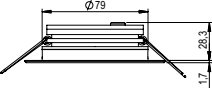
M	■ ■ ■ ■ RGBW multi-color
---	--------------------------

Control

I	internal dimming control, 2-wire system
E	external dimming control, 3-wire system

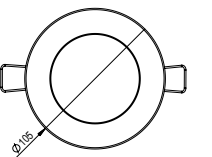
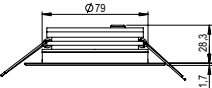
INTENSA MRM0230

Power supply	12–24 Vdc, max. 500 mA/12 Vdc or 260 mA/24 Vdc
Reflector angle	130°
Optical window	High-grade polycarbonate glass
Luminous flux	max. 530 lm (daylight white)
White color temperature	4500K (daylight) or 3000K (warm)
Casing	Black anodized aluminium
Protection	IP 65
Dimensions	Ø105mm x 30mm
Mounting hole	Ø79mm x 29mm
Weight	Aluminium front shape 190g Stainless steel front shape 250g



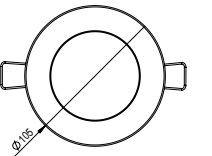
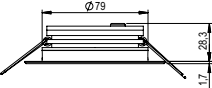
INTENSA MRM0340

Power supply	12–24 Vdc, max. 800 mA/12 Vdc or 420 mA/24 Vdc
Reflector angle	130°
Optical window	High-grade polycarbonate glass
Luminous flux	max. 800 lm (daylight white)
White color temperature	4500K (daylight) or 3000K (warm)
Casing	Black anodized aluminium
Protection	IP 65
Dimensions	Ø105mm x 30mm
Mounting hole	Ø79mm x 29mm
Weight	Aluminium front shape 190g Stainless steel front shape 250g



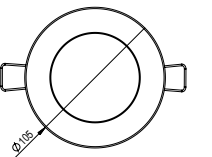
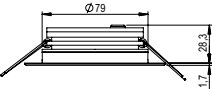
INTENSA MRM0380

Power supply	12–24 Vdc, max. 800 mA/12 Vdc or 420 mA/24 Vdc
Reflector angle	130°
Optical window	High-grade polycarbonate glass
Luminous flux	max. 1300 lm (daylight white)
White color temperature	4500K (daylight) or 3000K (warm)
Casing	Black anodized aluminium
Protection	IP 65
Dimensions	Ø105mm x 30mm
Mounting hole	Ø79mm x 29mm
Weight	Aluminium front shape 190g Stainless steel front shape 250g



INTENSA MRM0625

Power supply	12–24 Vdc, max. 650 mA/12 Vdc or 350 mA/24 Vdc
Reflector angle	130°
Optical window	High-grade polycarbonate glass
Luminous flux	max. 550 lm
White color temperature	Adjustable, from 2500K to 7500K in 21 steps
Casing	Black anodized aluminium
Protection	IP 65
Dimensions	Ø105mm x 30mm
Mounting hole	Ø79mm x 29mm
Weight	Aluminium front shape 190g Stainless steel front shape 250g



Front shape

MAW	round, modern, painted white aluminium	QMAW	square, modern, painted white aluminium
MAB	round, modern, painted beige aluminium	QMAB	square, modern, painted beige aluminium
MSP	round, modern, polished stainless steel	QMSP	square, modern, polished stainless steel
MSG	round, modern, polished gold (PVD) stainless steel	QMSG	square, modern, polished gold (PVD) stainless steel
MSS	round, modern, satin stainless steel	QMSS	square, modern, satin stainless steel

ASTRA

Compact LED light designed with 1, 3 or 6 high-power LEDs with electronic driver built-in waterproof anodized aluminium casing for surface mounting. Innovative electronic design with built-in microprocessor enables network connections and remote control with digital dimming. Built-in ASTEL protocol enables complete lighting control by using optional DMX512 interface MXU01. Advanced optical system with reflector and holographic diffuser allows perfect light spread. Different color temperature options offer perfect solutions in the interior and exterior. Due to wide range of prestige massive face shapes made of alluminium or stainless steel the ASTRA is suitable to fit on luxury yachts and superyachts. All models are designed for operating at extreme temperature and voltage conditions with thermal, transient and reverse polarity protections.

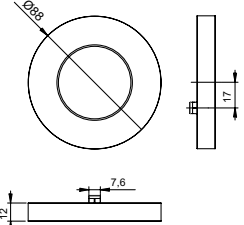
Features

- 1, 3 or 6 High-Power LEDs Design
- Anodized Aluminium Casings
- Massive Face Shapes with Different Finishes
- White, Blue, Green or Red Lighting
- Reflector with Holographic Diffuser
- Microprocessor Control
- Digital Dimming
- DMX512 Network Control
- Polarity Protection
- Transient Protection
- Thermal Protection
- Wide Range Power Supply
- Low Power Consumption
- Simple Installation

Simply
the brightest.

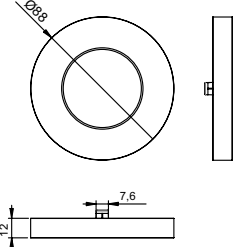
ASTRA MSM0115

Power supply	12–24 Vdc, max. 300 mA/12 Vdc or 155 mA/24 Vdc
Reflector angle	100°
Optical window	High-grade polycarbonate glass
Luminous flux	max. 270 lm (daylight white)
White color temperature	4500K (daylight) or 3000K (warm)
Casing	Black anodized aluminium
Protection	IP 65
Dimensions	Ø88 mm x 12 mm
Weight	Aluminium front shape 170g Stainless steel front shape 260g



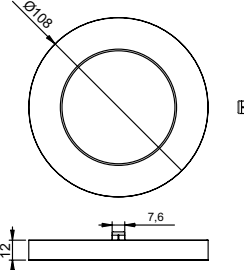
ASTRA MSM0320

Power supply	12–24 Vdc, max. 330 mA/12 Vdc or 185 mA/24 Vdc
Reflector angle	100°
Optical window	High-grade polycarbonate glass
Luminous flux	max. 430 lm (daylight white)
White color temperature	4500K (daylight) or 3000K (warm)
Casing	Black anodized aluminium
Protection	IP 65
Dimensions	Ø88 mm x 12 mm
Weight	Aluminium front shape 170g Stainless steel front shape 260g



ASTRA MSM0650

Power supply	12–24 Vdc, max. 600 mA/12 Vdc or 315 mA/24 Vdc
Reflector angle	100°
Optical window	High-grade polycarbonate glass
Luminous flux	max. 870 lm (daylight white)
White color temperature	4500K (daylight) or 3000K (warm)
Casing	Black anodized aluminium
Protection	IP 65
Dimensions	Ø108 mm x 12 mm
Weight	Aluminium front shape 250g Stainless steel front shape 350g



Color of lighting

W	■ warm white
D	■ daylight white
B	■ blue
G	■ green
R	■ red

Control

I	internal dimming control, 2-wire system
E	external dimming control, 3-wire system

Front shape

AW	painted white aluminium
AB	painted beige aluminium
SP	polished stainless steel
SG	polished gold (PVD) stainless steel
SS	satın stainless steel

ARCUS

Innovative multi-color RGB LED interior & exterior light built-in waterproof stainless steel casing with different front shapes. It is suitable for using as interior and exterior downlight and step or staircase light to light to the floor under the angle of 45 degrees or straight.

The main feature is that ARCUS series allows changing of the color of lighting manually or automatically through the complete rainbow spectrum.

The most advanced electronic design with built-in microprocessor enables network connection and simple control of complete group of the lights.

Built-in ASTEL protocol enables complete lighting control by using optional DMX512 interface MXU01.

All the models are available in polished stainless steel casings with multi-color RGB or WGB lighting with 1 high-brightness LED.

Features

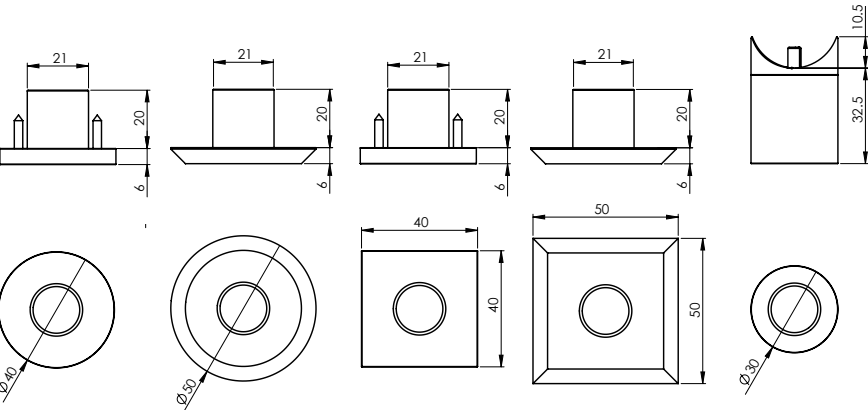
- Innovative Design
- Stainless Steel Casings
- Different Face Shapes
- Multi-Color RGB Lighting
- Reflector with Holographic Diffuser
- Microprocessor Control
- DMX512 Network Control
- Polarity Protection
- Transient Protection
- Wide Range Power Supply
- Low Power Consumption
- Simple Installation



Simply
the brightest.

ARCUS MRM01

Power supply	12-24 Vdc, max. 32 mA/12 Vdc or 18 mA/24 Vdc
Lens angle	60° (angular lighting) or 90° (straight lighting)
Optical window	High-grade polycarbonate glass
Luminous flux	max. 9 lm
Lighting color	RGB spectrum
Operating temperature	-10°C - +50°C
Casing	Stainless steel (SAE316L)
Protection	IP 68
Dimensions	Ø40 mm x 26mm (slope front shape) Ø50 mm x 26mm (gentle front shape) Ø30 mm x 43mm (rail-mount model)
Mounting hole	21mm (not for rail-mount model)
Weight	75g (slope front shape) 95g (gentle front shape) 150g (rail-mount model)



Color of lighting

M RGB multi-color

Direction of lighting

S straight
A angular (not for rail-mount model)

Front shape

S round slope
G round gentle
QS square slope
QG square gentle
R rail-mount



SPEIRA
SPEIRA MQWAVE01

LAENA
LAENA MQMURO01

Superyacht Interior LED Lights

SPEIRA

Interior LED light SPEIRA with Direct-Drive LED mains power supply designed with advanced optical holographic propagation technology which allows perfect light spreading and the best illumination quality with three different white color temperature options.

The translucent natural stone veneer screen allows perfect light spreading to achieve unique appearance of the interior floor light and surroundings.

Built-in microprocessor enables network connections and remote control with digital dimming.

Built-in ASTEL protocol enables complete DMX512 lighting control by using of optional interfaces.

All models are designed for operating at normal temperature conditions with thermal, transient and reverse polarity protections.

Features

- Anodized Aluminium / Steel Casings
- Sand-Blasting and Anodizing E6C0 Finishing / Painting
- Warm, Daylight or Cool White Lighting
- High Grade Polycarbonate Glass Optical Window
- Reflector with Holographic Diffuser
- Translucent Natural Stone Veneer Screen
- AC Direct-Drive LED Mains Power Supply
- Flicker-Free Triac and Phase Dimming
- Built-in ASTEL Protocol for DMX512 Control*
- AC Power Line Surge Protection
- Low Power Consumption
- Simple Installation



Simply
the brightest.

SPEIRA MQWAVE01

Power supply	230 Vac / 90 mA max.
Optical window	High Grade Polycarbonate Glass
Color Rendering Index (CRI)	80 - 90
Luminous flux	max. 1.521 lm (cool white)
ASTEL protocol default address	1
Casing	Anodized Aluminium / Steel
Operating temperature	-10°C - +40°C
Dimensions (panel)	Ø34 x 125 cm
Weight	12 kg

Type of screen

SF - Natural Stone Veneer - 'Falling Leaves'



SR - Natural Stone Veneer - 'Rustique'



Color of lighting

WW	■ warm white
DW	■ daylight white
CW	■ cool white

Control

T	Dimming (triac)
I	Switch dimming
E	Switch dimming

LAENA

Interior LED light LAENA with Direct-Drive LED mains power supply designed with advanced optical holographic propagation technology which allows perfect light spreading and the best illumination quality with three different white color temperature options.

The translucent natural stone veneer screen allows perfect light spreading to achieve unique appearance of the interior wall/ceiling light and surroundings.

Built-in microprocessor enables network connections and remote control with digital dimming.

Built-in ASTEL protocol enables complete DMX512 lighting control by using of optional interfaces.

All models are designed for operating at normal temperature conditions with thermal, transient and reverse polarity protections.

Features

- Anodized Aluminium / Steel Casings
- Sand-Blasting and Anodizing E6C0 Finishing / Painting
- Warm, Daylight or Cool White Lighting
- High Grade Polycarbonate Glass Glass Optical Window
- Reflector with Holographic Diffuser
- Translucent Natural Stone Veneer Screen
- AC Direct-Drive LED Mains Power Supply
- Flicker-Free Triac and Phase Dimming
- Built-in ASTEL Protocol for DMX512 Control*
- AC Power Line Surge Protection
- Low Power Consumption
- Simple Installation



Simply
the brightest.



Color of lighting

WW	■ warm white
DW	■ daylight white
CW	■ cool white

Control

T	Dimming (triac)
I	Switch dimming
E	Switch dimming

LAENA MQMURO01

Power supply	230 Vac / 90 mA max.
Optical window	High Grade Polycarbonate Glass
Color Rendering Index (CRI)	80 - 90
Luminous flux	max. 1.521 lm (cool white)
ASTEL protocol default address	1
Casing	Anodized Aluminium / Steel
Operating temperature	-10°C - +40°C
Dimensions (panel)	30 x 21.5 x 19.5 mm
Weight	1 kg

Type of screen

SF - Natural Stone Veneer - 'Falling Leaves'



SR - Natural Stone Veneer - 'Rustique'





EQUATOR

EQUATOR MSR0640
EQUATOR MSR1280
EQUATOR MSR36240

CONUS

CONUS MST0680
CONUS MST18240
CONUS MSR0680
CONUS MSR18240

CONVEX

CONVEX MST0680
CONVEX MST18240
CONVEX MSR0680
CONVEX MSR18240

PLAQUE

PLAQUE MFM0680
PLAQUE MFM18240

Underwater LED Lights

EQUATOR

Ultra-thin compact surface-mount design with built-in driver enables very simple installation on the stern and both sides of the hull without making any bigger holes through the hull under waterline. Single-color light control by using optional momentary switch or optional DMX512 interface MXU01 and PWM dimmer MDU13 with built-in ASTEL protocol. Multi-color RGB or WGB light control with dimming and changing of color of lighting manually or automatically through the complete rainbow spectrum by using optional momentary switch or optional DMX512 interface MXU01 with built-in ASTEL protocol.

Features

- Innovative and Patented Design
- Aluminium Bronze or Stainless Steel Ultra-Thin Casing
- 6 Power LEDs Design
- White, Blue, Green, RGB or WGB Multi-Color Lighting
- High Grade Polycarbonate Glass Optical Window
- Vacuum Metalized Reflector
- Remote Control
- Digital Dimming
- DMX512 Network Control
- Polarity Protection
- Transient Protection
- Thermal Protection
- Wide Range Power Supply
- Low Power Consumption
- Simple Installation

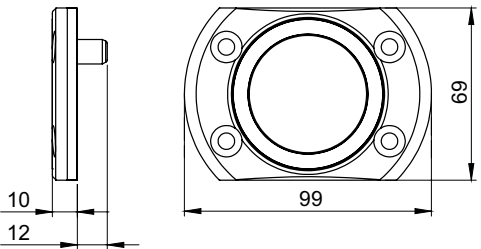


The thinnest
surface-mount
underwater lights.



EQUATOR MSR0640

Power supply	12–24 Vdc, max. 800 mA/12 Vdc or 410 mA/24 Vdc
Lens angle	60°
Optical window	High-grade polycarbonate glass
Luminous flux	max. 1.130 lm (white)
White color temperature	6.000 - 10.000 K
Operating temperature	-10°C - +50°C
Casing	Aluminium bronze (AB2) or stainless steel (SAE316L)
Protection	IP 68
Dimensions	99 x 69 x 10 mm
Weight	0.3 kg



Color of lighting

W	white
B	blue
G	green
M	RGB multi-color
T	WGB multi-color
MW	RGBW multi-color

Material of casing

AB2	aluminium bronze
SSP	stainless steel

PATENTED

EQUATOR

Ultra-thin compact surface-mount design with built-in driver enables very simple installation on the stern and both sides of the hull without making any bigger holes through the hull under waterline. Single-color light control by using optional momentary switch or optional DMX512 interface MXU01 and PWM dimmer MDU13 with built-in ASTEL protocol. Multi-color RGB or WGB light control with dimming and changing of color of lighting manually or automatically through the complete rainbow spectrum by using optional momentary switch or optional DMX512 interface MXU01 with built-in ASTEL protocol.

Features

- Innovative and Patented Design
- Aluminium Bronze or Stainless Steel Ultra-Thin Casing
- 12 Power LEDs Design
- White, Blue, Green, RGB or WGB Multi-Color Lighting
- High Grade Polycarbonate Glass Optical Window
- Vacuum Metalized Reflector
- Remote Control
- Digital Dimming
- DMX512 Network Control
- Polarity Protection
- Transient Protection
- Thermal Protection
- Wide Range Power Supply
- Low Power Consumption
- Simple Installation

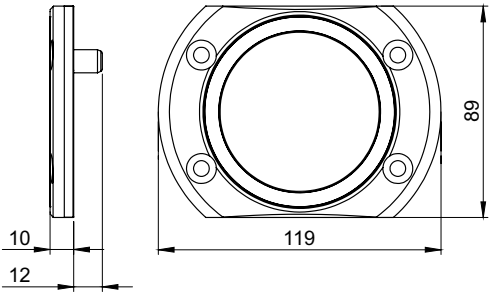


The thinnest
surface-mount
underwater lights.



EQUATOR MSR1280

Power supply	12-24 Vdc, max. 1.8 A/12 Vdc or 900 mA/24 Vdc
Lens angle	60°
Optical window	High-grade polycarbonate glass
Luminous flux	max. 2.250 lm (white)
White color temperature	6.000 - 10.000 K
Operating temperature	-10°C - +50°C
Casing	Aluminium bronze (AB2) or stainless steel (SAE316L)
Protection	IP 68
Dimensions	119 x 89 x 10 mm
Weight	0.4 kg



Color of lighting

W	white
B	blue
G	green
M	RGB multi-color
T	WGB multi-color
MW	RGBW multi-color

Material of casing

AB2	aluminium bronze
SSP	stainless steel

PATENTED

EQUATOR

Ultra-thin compact surface-mount design with built-in driver enables very simple installation on the stern and both sides of the hull without making any bigger holes through the hull under waterline. Single-color light control by using optional momentary switch or optional DMX512 interface MXU01 and PWM dimmer MDU13 with built-in ASTEL protocol. Multi-color RGB or WGB light control with dimming and changing of color of lighting manually or automatically through the complete rainbow spectrum by using optional momentary switch or optional DMX512 interface MXU01 with built-in ASTEL protocol.

Features

- Innovative and Patented Design
- Aluminium Bronze or Stainless Steel Ultra-Thin Casing
- 36 Power LEDs Design
- White, Blue, Green, RGB or WGB Multi-Color Lighting
- High Grade Polycarbonate Glass Optical Window
- Vacuum Metalized Reflector
- Remote Control
- Digital Dimming
- DMX512 Network Control
- Polarity Protection
- Transient Protection
- Thermal Protection
- Wide Range Power Supply
- Low Power Consumption
- Simple Installation

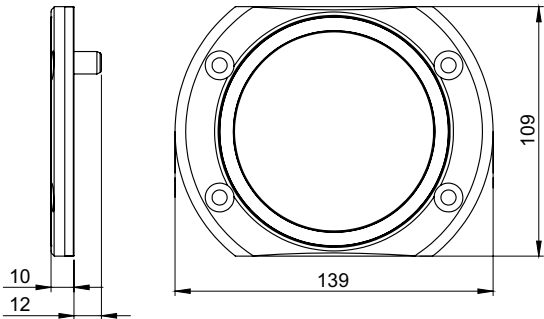


The thinnest
surface-mount
underwater lights.



EQUATOR MSR36240

Power supply	12-24 Vdc, max. 4.3 A/12 Vdc or 2 A/24 Vdc
Lens angle	60°
Optical window	High-grade polycarbonate glass
Luminous flux	max. 6.800 lm (white)
White color temperature	6.000 - 10.000 K
Operating temperature	-10°C - +50°C
Casing	Aluminium bronze (AB2) or stainless steel (SAE316L)
Protection	IP 68
Dimensions	139 x 109 x 10 mm
Weight	0.6 kg



Color of lighting

W	white
B	blue
G	green
M	RGB multi-color
T	WGB multi-color

Material of casing

AB2	aluminium bronze
SSP	stainless steel

PATENTED

CONUS

Registered slope-truncated cone designed casing for installation on the hull to light in different directions to the sea ground and to the both sides of the yacht.

Surface-mount designed casing enables very simple installation on the hull without making any bigger holes through the hull under water line.

Single-color light control by using optional momentary switch or optional DMX512 interface MXU01 and PWM dimmer MDU13 with built-in ASTEL protocol.

Multi-color RGB or WGB light control with dimming and changing of color of lighting manually or automatically through the complete rainbow spectrum by using optional momentary switch or optional DMX512 interface MXU01 and PWM dimmer MDU13 with built-in ASTEL protocol.

Features

- Aluminium Bronze or Anodized Aluminium Casing
- 6 or 18 High-Power LEDs Design
- White, Blue, Green, RGB or WGB Multi-Color Lighting
- Tempered Glass Optical Window
- High-Efficiency Lens
- Polarity Protection
- Transient Protection
- Thermal Protection
- Low Power Consumption
- Simple Installation
- Remote Control
- Digital Dimming (optional)
- DMX512 Network Control (optional)



Simply
the brightest.



Color of lighting

W	white
B	blue
G	green

Material of casing

AB2	aluminium bronze
ALN	anodized aluminium



Color of lighting

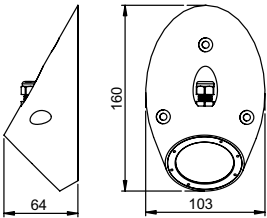
W	white
B	blue
G	green
M	RGB multi-color
T	WGB multi-color

Material of casing

AB2	aluminium bronze
ALN	anodized aluminium

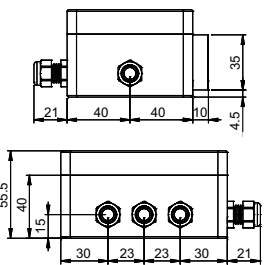
CONUS MST0680

Power requirement	1 A / 1.5A
Lens angle	50°
Optical window	6 mm depth tempered glass
Luminous flux	max. 3.500 lm (white)
White color temperature	6.000 - 10.000 K
Operating temperature	-10°C - +50°C
Casing	Aluminium bronze (AB2) or anodized aluminium
Protection	IP 68
Dimensions	160x103x64mm
Weight	2.4 kg (bronze) / 0.9 kg (aluminium)



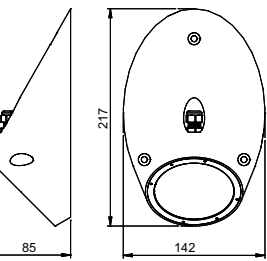
Power Supply Unit MPS021000/MPS021500

Input voltage	24 Vdc
Consumption	max. 1.7 Adc
Operating temperature	-10°C - +50°C
Casing	ABS
Protection	IP 65
Dimensions	127x111x55.5mm
Weight	0.3 kg



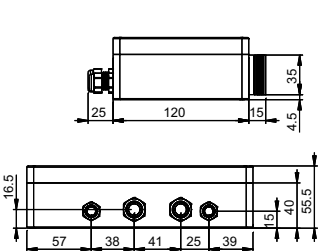
CONUS MST18240

Power requirement	1 A / 1.5A
Lens angle	50°
Optical window	6 mm depth tempered glass
Luminous flux	max. 3.500 lm (white)
White color temperature	6.000 - 10.000 K
Operating temperature	-10°C - +50°C
Casing	Aluminium bronze (AB2) or anodized aluminium
Protection	IP 68
Dimensions	160x103x64mm
Weight	2.4 kg (bronze) / 0.9 kg (aluminium)



Power Supply Unit MPS061000 / MPS061500

Input voltage	24 Vdc
Consumption	max. 5 Adc
Operating temperature	-10°C - +50°C
Casing	ABS
Protection	IP 65
Dimensions	200 x 160 x 55.5mm
Weight	0.6 kg



CONUS

Registered slope-truncated cone designed casing for installation on the hull to light in different directions to the sea ground and to the both sides of the yacht.

Surface-mount designed casing enables very simple installation on the hull without making any bigger holes through the hull under water line.

Single-color light control by using optional momentary switch or optional DMX512 interface MXU01 and PWM dimmer MDU13 with built-in ASTEL protocol.

Multi-color RGB or WGB light control with dimming and changing of color of lighting manually or automatically through the complete rainbow spectrum by using optional momentary switch or optional DMX512 interface MXU01 and PWM dimmer MDU13 with built-in ASTEL protocol.

Features

- Aluminium Bronze or Anodized Aluminium Casing
- 6 or 18 High-Power LEDs Design
- White, Blue, Green, RGB or WGB Multi-Color Lighting
- Tempered Glass Optical Window
- High-Efficiency Lens
- Polarity Protection
- Transient Protection
- Thermal Protection
- Low Power Consumption
- Simple Installation
- Remote Control
- Digital Dimming (optional)
- DMX512 Network Control (optional)



Simply
the brightest.



Color of lighting

W	white
B	blue
G	green

Material of casing

AB2	aluminium bronze
ALN	anodized aluminium



Color of lighting

W	white
B	blue
G	green
M	RGB multi-color
T	WGB multi-color

Material of casing

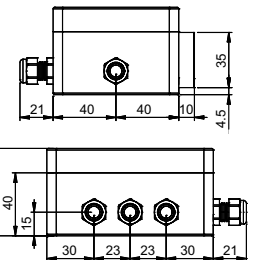
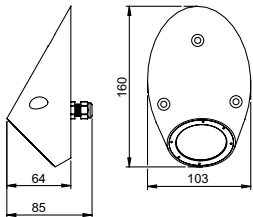
AB2	aluminium bronze
ALN	anodized aluminium

CONUS MSR0680

Power requirement	1 A / 1.5A
Lens angle	50°
Optical window	6 mm depth tempered glass
Luminous flux	max. 3.500 lm (white)
White color temperature	6.000 - 10.000 K
Operating temperature	-10°C - +50°C
Casing	Aluminium bronze (AB2) or anodized aluminium
Protection	IP 68
Dimensions	160x103x85mm
Weight	2.4 kg (bronze) / 0.9 kg (aluminium)

Power Supply Unit MPS021000/MPS021500

Input voltage	24 Vdc
Consumption	max. 1.7 Adc
Operating temperature	-10°C - +50°C
Casing	ABS
Protection	IP 65
Dimensions	127x111x55.5mm
Weight	0.3 kg

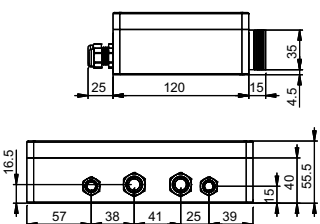
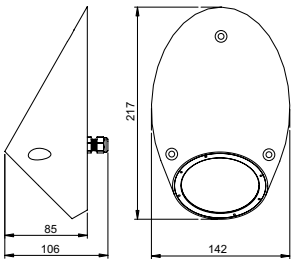


CONUS MSR18240

Power requirement	3x1 A / 3x1.5 A
Lens angle	50°
Optical window	6 mm depth tempered glass
Luminous flux	max. 10.700 lm (white)
White color temperature	6.000 - 10.000 K
Operating temperature	-10°C - +50°C
Casing	Aluminium bronze (AB2) or anodized aluminium
Protection	IP 68
Dimensions	217x142x106mm
Weight	6.0 kg (bronze) / 2.3 kg (aluminium)

Power Supply Unit MPS061000 / MPS061500

Input voltage	24 Vdc
Consumption max.	5 Adc
Operating temperature	-10°C - +50°C
Casing	ABS
Protection	IP 65
Dimensions	200x160x55.5mm
Weight	0.6 kg



CONVEX

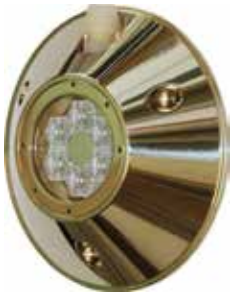
Truncated cone surface-mount designed casing enables very simple installation on the hull without making any bigger holes through the hull under water line.
Single-color light control by using optional momentary switch or optional DMX512 interface MXU01 and PWM dimmer MDU13 with built-in ASTEL protocol.
Multi-color RGB or WGB light control with dimming and changing of color of lighting manually or automatically through the complete rainbow spectrum by using optional momentary switch or optional DMX512 interface MXU01 and PWM dimmer MDU13 with built-in ASTEL protocol.

Features

- Aluminium Bronze or Anodized Aluminium Casing
- 6 or 18 High-Power LEDs Design
- White, Blue, Green, RGB or WGB Multi-Color Lighting
- Tempered Glass Optical Window
- High-Efficiency Lens
- Polarity Protection
- Transient Protection
- Thermal Protection
- Low Power Consumption
- Simple Installation
- Remote Control
- Digital Dimming (optional)
- DMX512 Network Control (optional)



Simply
the brightest.



Color of lighting

W	white
B	blue
G	green

Material of casing

AB2	aluminium bronze
ALN	anodized aluminium



Color of lighting

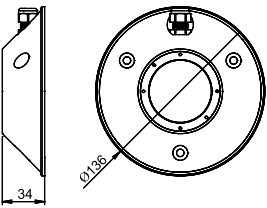
W	white
B	blue
G	green
M	RGB multi-color
T	WGB multi-color

Material of casing

AB2	aluminium bronze
ALN	anodized aluminium

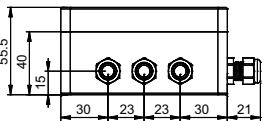
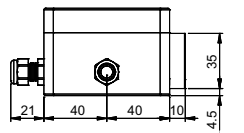
CONVEX MST0680

Power requirement	1 A / 1.5A
Lens angle	50°
Optical window	6 mm depth tempered glass
Luminous flux	max. 3.500 lm (white)
White color temperature	6.000 - 10.000 K
Operating temperature	-10°C - +50°C
Casing	Aluminium bronze (AB2) or anodized aluminium
Protection	IP 68
Dimensions	Ø136x34mm
Weight	2.0 kg (bronze) / 0.8 kg (aluminium)



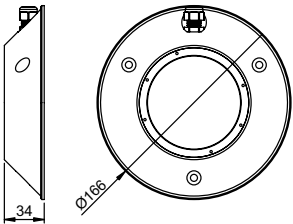
Power Supply Unit MPS021000/MPS021500

Input voltage	24 Vdc
Consumption	max. 1.7 Adc
Operating temperature	-10°C - +50°C
Casing	ABS
Protection	IP 65
Dimensions	127x111x55.5mm
Weight	0.3 kg



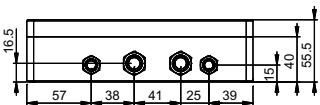
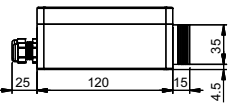
CONVEX MST18240

Power requirement	3x1 A / 3x1.5 A
Lens angle	50°
Optical window	6 mm depth tempered glass
Luminous flux	max. 10.700 lm (white)
White color temperature	6.000 - 10.000 K
Operating temperature	-10°C - +50°C
Casing	Aluminium bronze (AB2) or anodized aluminium
Protection	IP 68
Dimensions	Ø166x34mm
Weight	2.7 kg (bronze) / 1.1 kg (aluminium)



Power Supply Unit MPS061000 / MPS061500

Input voltage	24 Vdc
Consumption	max. 5 Adc
Operating temperature	-10°C - +50°C
Casing	ABS
Protection	IP 65
Dimensions	200 x 160 x 55.5mm
Weight	0.6 kg



CONVEX

Truncated cone surface-mount designed casing enables very simple installation on the hull without making any bigger holes through the hull under water line.
Single-color light control by using optional momentary switch or optional DMX512 interface MXU01 and PWM dimmer MDU13 with built-in ASTEL protocol.
Multi-color RGB light control with dimming and changing of color of lighting manually or automatically through the complete rainbow spectrum by using optional momentary switch or optional DMX512 interface MXU01 and PWM dimmer MDU13 with built-in ASTEL protocol.

Features

- Aluminium Bronze or Anodized Aluminium Casing
- 6 or 18 High-Power LEDs Design
- White, Blue, Green, RGB or WGB Multi-Color Lighting
- Tempered Glass Optical Window
- High-Efficiency Lens
- Polarity Protection
- Transient Protection
- Thermal Protection
- Low Power Consumption
- Simple Installation
- Remote Control
- Digital Dimming (optional)
- DMX512 Network Control (optional)



Simply
the brightest.



Color of lighting

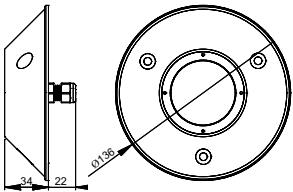
W	white
B	blue
G	green

Material of casing

AB2	aluminium bronze
ALN	anodized aluminium

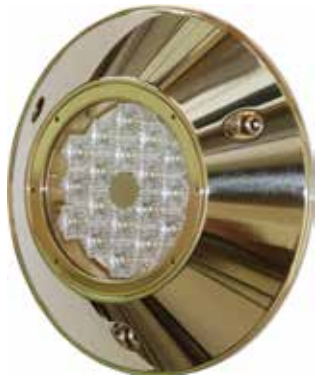
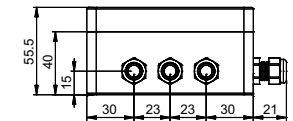
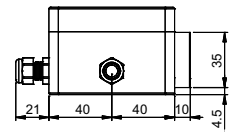
CONVEX MSR0680

Power requirement	1 A / 1.5 A
Lens angle	50°
Optical window	6 mm depth tempered glass
Luminous flux	max. 3.500 lm (white)
White color temperature	6.000 - 10.000 K
Operating temperature	-10°C - +50°C
Casing	Aluminium bronze (AB2) or anodized aluminium
Protection	IP 68
Dimensions	Ø136x34mm
Weight	2.0 kg (bronze) / 0.8 kg (aluminium)



Power Supply Unit MPS021000/MPS021500

Input voltage	24 Vdc
Consumption	max. 1.7 Adc
Operating temperature	-10°C - +50°C
Casing	ABS
Protection	IP 65
Dimensions	127x111x55.5mm
Weight	0.3 kg



Color of lighting

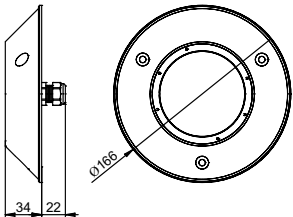
W	white
B	blue
G	green
M	RGB multi-color
T	WGB multi-color

Material of casing

AB2	aluminium bronze
ALN	anodized aluminium

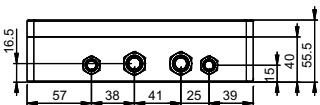
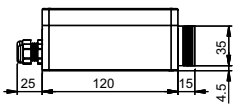
CONVEX MSR18240

Power requirement	3x1 A / 3x1.5 A
Lens angle	50°
Optical window	6 mm depth tempered glass
Luminous flux	max. 10.700 lm (white)
White color temperature	6.000 - 10.000 K
Operating temperature	-10°C - +50°C
Casing	Aluminium bronze (AB2) or anodized aluminium
Protection	IP 68
Dimensions	Ø166x34mm
Weight	2.7 kg (bronze) / 1.1 kg (aluminium)



Power Supply Unit MPS061000 / MPS061500

Input voltage	24 Vdc
Consumption	max. 5 Adc
Operating temperature	-10°C - +50°C
Casing	ABS
Protection	IP 65
Dimensions	200 x 160 x 55.5mm
Weight	0.6 kg



PLAQUE

The underwater light designed to use the latest LED lighting technology for flush-mount installation where the most important is low-profile casing to avoid high water resistance and quality materials to assure very reliability installation and operation.

Single-color light control by using optional momentary switch or optional DMX512 interface MXU01 and PWM dimmer MDU13 with built-in ASTEL protocol.

Multi-color RGB light control with dimming and changing of color of lighting manually or automatically through the complete rainbow spectrum by using optional momentary switch or optional DMX512 interface MXU01 and PWM dimmer MDU13 with built-in ASTEL protocol.

Features

- Aluminium Bronze Casing
- 6 or 18 High-Power LEDs Design
- White, Blue, Green, RGB or WGB Multi-Color Lighting
- Tempered Glass Optical Window
- High-Efficiency Lens
- Polarity Protection
- Transient Protection
- Thermal Protection
- Low Power Consumption
- Remote Control
- Digital Dimming (optional)
- DMX512 Network Control (optional)



Simply
the brightest.



Color of lighting

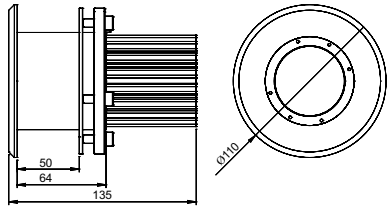
W	white
B	blue
G	green

Material of casing

AB2	aluminium bronze
-----	------------------

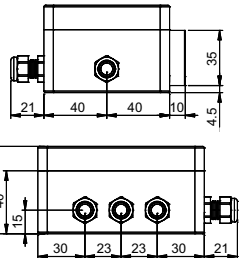
PLAQUE MFM0680

Power requirement	1 A / 1.5 A
Lens angle	50°
Optical window	6 mm depth tempered glass
Luminous flux	max. 3.500 lm (white)
White color temperature	6.000 - 10.000 K
Operating temperature	-10°C - + 50°C
Casing	Aluminium bronze (AB2)
Protection	IP 68
Dimensions	Ø110x135mm
Weight	2.3 kg



Power Supply Unit MPS021000/MPS021500

Input voltage	24 Vdc
Consumption	max. 1.7 Adc
Operating temperature	-10°C - + 50°C
Casing	ABS
Protection	IP 65
Dimensions	127x111x55.5mm
Weight	0.3 kg



Color of lighting

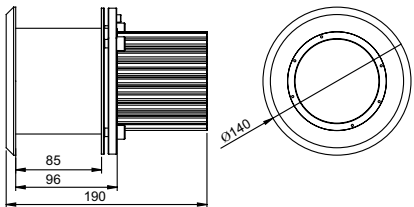
W	white
B	blue
G	green
M	RGB multi-color
T	WGB multi-color

Material of casing

AB2	aluminium bronze
-----	------------------

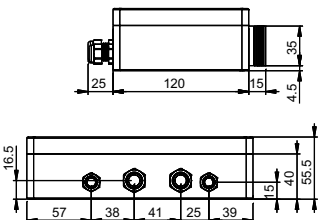
PLAQUE MFM18240

Power requirement	3x1 A / 3x1.5 A
Lens angle	50°
Optical window	6 mm depth tempered glass
Luminous flux	max. 10.700 lm (white)
White color temperature	6.000 - 10.000 K
Operating temperature	-10°C - + 50°C
Casing	Aluminium bronze (AB2)
Protection	IP 68
Dimensions	Ø140x190mm
Weight	6.7 kg



Power Supply Unit MPS061000 / MPS061500

Input voltage	24 Vdc
Consumption	max. 5 Adc
Operating temperature	-10°C - + 50°C
Casing	ABS
Protection	IP 65
Dimensions	200 x 160 x 55.5mm
Weight	0.6 kg





EQUATOR

EQUATOR MSR36240P
EQUATOR MSR36240S

CONVEX

CONVEX MTH18240S
CONVEX MSR18240S
CONVEX MSR09200
CONVEX MSR18300

PLAQUE

PLAQUE MFM18240S
PLAQUE MFM09200
PLAQUE MFM18300

Superyacht Underwater LED Lights

EQUATOR

Ultra-thin compact design with built-in driver for surface-mount installation.
Single-color light control by using optional momentary switch or optional DMX512 interface MXU01 and PWM dimmer MDU13 with built-in ASTEL protocol
Multi-color RGB light control with dimming and changing of color of lighting manually or automatically through the complete rainbow spectrum by using optional momentary switch or optional DMX512 interface MXU01 with built-in ASTEL protocol.

Features

- Innovative Design
- Stainless Steel Ultra-thin Casing
- 36 Power LEDs Design
- White, Blue, Green, RGB or WGB Multi-Color Lighting
- High Grade Polycarbonate Glass Optical Window
- Vacuum Metalized Reflector
- Remote Control
- Digital Dimming
- DMX512 Network Control
- Polarity Protection
- Transient Protection
- Thermal Protection
- Low Power Consumption



Simply
the brightest.

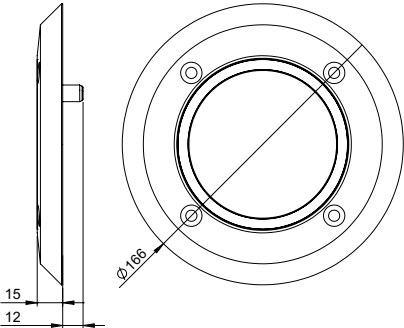


Color of lighting

W	white
B	blue
G	green
M	RGB multi-color
T	WGB multi-color

EQUATOR MSR36240P

Power supply	24 Vdc, max. 3.4 A
Lens angle	60°
Optical window	High-grade polycarbonate glass
Luminous flux max.	8.300 lm (white)
White color temperature	6.000 - 10.000 K
Operating temperature	-10°C - +50°C
Casing	Stainless steel (SAE316L)
Protection	IP 68
Dimensions	Ø166 x 15 mm
Weight	1.7 kg

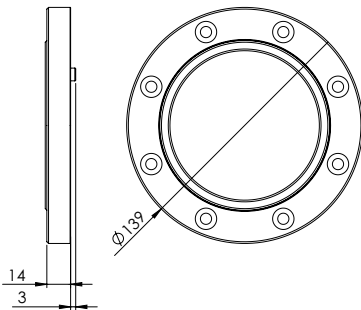


Color of lighting

W	white
B	blue
G	green
M	RGB multi-color
T	WGB multi-color

EQUATOR MSR36240S

Power supply	24 Vdc, max. 3.4 A
Lens angle	60°
Optical window	High-grade polycarbonate glass
Luminous flux	max. 8.300 lm (white)
White color temperature	6.000 - 10.000 K
Operating temperature	-10°C - +50°C
Casing	Stainless steel (SAE316L)
Protection	IP 68
Dimensions	Ø139 x 15 mm
Weight	1.4 kg



CONVEX

Robust design with separate power supply unit (driver) for installation with optional cofferdam. Single-color light control by using optional momentary switch or optional DMX512 interface MXU01 and PWM dimmer MDU13 with built-in ASTEL protocol
Multi-color RGB or WGB light control with dimming and changing of color of lighting manually or automatically through the complete rainbow spectrum by using optional momentary switch or optional DMX512 interface MXU01 and PWM dimmer MDU13 with built-in ASTEL protocol.

Features

- Innovative Design
- Stainless Steel Casing
- 18 Power LEDs Design
- White, Blue, Green, RGB or WGB Multi-Color Lighting
- Tempered Glass Optical Window
- High-Efficiency Lens
- Remote Control
- Digital Dimming
- DMX512 Network Control
- Polarity Protection
- Transient Protection
- Thermal Protection
- Low Power Consumption



Simply
the brightest.

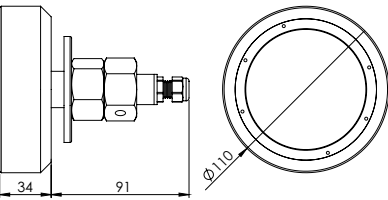


Color of lighting

W	white
B	blue
G	green
M	RGB multi-color
T	WGB multi-color

CONVEX MTH18240S

Power requirement	3 x 1 A / 3×1.5 A
Lens Angle	50°
Optical window	6 mm depth tempered glass
Luminous flux	max. 10.700 lm (white)
White color temperature	6.000K – 10.000k
Operating temperature	-10°C – +50°C
Casing	Stainless Steel (SAE316L)
Protection	IP 68
Dimensions	Ø 110 x 125 mm
Weight	1.9 kg



Power Supply Unit MPS061000 / MPS061500

Input voltage	24 Vdc
Consumption	max. 5 Adc
Operating temperature	-10°C – +55°C
Casing	ABS
Protection	IP 65
Dimensions	200 x 160 x 55.5mm
Weight	0.6 kg

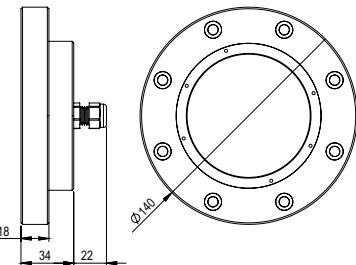


Color of lighting

W	white
B	blue
G	green
M	RGB multi-color
T	WGB multi-color

CONVEX MSR18240S

Power requirement	3 x 1 A / 3×1.5 A
Lens Angle	50°
Optical window	6 mm depth tempered glass
Luminous flux	max. 10.700 lm (white)
White color temperature	6.000K – 10.000k
Operating temperature	-10°C – +50°C
Casing	Stainless Steel (SAE316L)
Protection	IP 68
Dimensions	Ø 140 x 34 mm
Weight	2.3 kg



Power Supply Unit MPS061000 / MPS061500

Input voltage	24 Vdc
Consumption	max. 5 Adc
Operating temperature	-10°C – +55°C
Casing	ABS
Protection	IP 65
Dimensions	200 x 160 x 55.5mm
Weight	0.6 kg

CONVEX

Professional robust design with separate power supply unit (driver) for installation with optional welded cofferdam.
White-color light control by using optional momentary switch or optional DMX512 interface MXU01 with built-in ASTEL protocol.
Multi-color RGBW light control with dimming and changing of color of lighting manually or automatically through the complete rainbow spectrum by using optional momentary switch or optional DMX512 interface MXU01 with built-in ASTEL protocol.

Features

- Innovative Design
- Stainless Steel Ultra-Thin Casing
- 9 or 18 High-Power LEDs Design
- White or RGBW Multi-Color Lighting
- Tempered Glass Optical Window
- Vacuum Metalized Reflector
- Remote Control
- Digital Dimming
- DMX512 Network Control
- Polarity Protection
- Transient Protection
- Thermal Protection



Simply
the brightest.

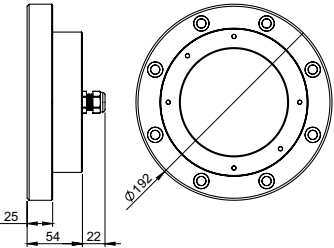


Color of lighting

W	white
MW	RGBW multi-color

CONVEX MSR09200

Power requirement	1A (white), 3 x 1 A (RGB)
Lens Angle	50°
Optical window	15 mm tempered glass
Luminous flux	max. 14.000 lm (white)
White color temperature	6.000K – 10.000k
Operating temperature	-10°C – +50°C
Casing	Stainless Steel (SAE316L) or aluminium
Protection	IP 68
Dimensions	Ø 192 x 54 mm
Weight	6.2 kg (stainless steel), 2.5 kg (aluminium)



Power Supply Unit MPS91000

Input voltage	120-277 Vac, 50/60Hz
Consumption	120W (white), 100W (RGB)
Operating temperature	-10°C – +55°C
Casing	ABS
Protection	IP 56
Dimensions	300 x 220 x 120 mm
Weight	3 kg (white), 4 kg (RGB)

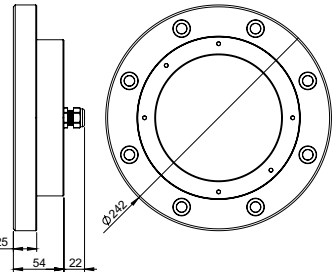


Color of lighting

W	white
MW	RGBW multi-color

CONVEX MSR18300

Power requirement	2 x 1A (white), 3 x 1 A (RGB)
Lens Angle	50°
Optical window	15 mm tempered glass
Luminous flux	max. 28.000 lm (white)
White color temperature	6.000K – 10.000k
Operating temperature	-10°C – +50°C
Casing	Stainless Steel (SAE316L) or aluminium
Protection	IP 68
Dimensions	Ø 242 x 54 mm
Weight	9.4 kg (stainless steel), 3.7 kg (aluminium)



Power Supply Unit MPS181000

Input voltage	120-277 Vac, 50/60Hz
Consumption	240W (white), 200W (RGB)
Operating temperature	-10°C – +55°C
Casing	ABS
Protection	IP 56
Dimensions	380 x 300 x 120 mm
Weight	4 kg (white), 5 kg (RGB)

PLAQUE

Robust design with separate power supply unit (driver) for installation with optional cofferdam. Single-color light control by using optional momentary switch or optional DMX512 interface MXU01 and PWM dimmer MDU13 with built-in ASTEL protocol
Multi-color RGB or WGB light control with dimming and changing of color of lighting manually or automatically through the complete rainbow spectrum by using optional momentary switch or optional DMX512 interface MXU01 and PWM dimmer MDU13 with built-in ASTEL protocol.

Features

- Innovative Design
- Stainless Steel Casing
- 18 Power LEDs Design
- White, Blue, Green, RGB or WGB Multi-Color Lighting
- Tempered Glass Optical Window
- High-Efficiency Lens
- Remote Control
- Digital Dimming
- DMX512 Network Control
- Polarity Protection
- Transient Protection
- Thermal Protection
- Low Power Consumption



Simply
the brightest.

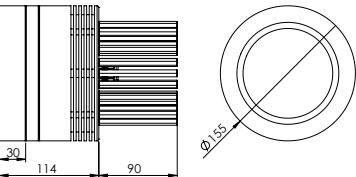


Color of lighting

W	white
B	blue
G	green
M	RGB multi-color
T	WGB multi-color

PLAQUE MFM18240S

Power requirement	3 x 1 A / 3×1.5 A
Lens Angle	50°
Optical window	6 mm depth tempered glass
Luminous flux	max. 10.700 lm (white)
White color temperature	6.000K – 10.000k
Operating temperature	-10°C – +50°C
Casing	Aluminium
Protection	IP 68
Dimensions	Ø155 x 173mm (without cofferdam)
Weight	3.6 kg (without cofferdam)



Power Supply Unit MPS061000 / MPS061500

Input voltage	24 Vdc
Consumption	max. 5 Adc
Operating temperature	-10°C – +50°C
Casing	ABS
Protection	IP 65
Dimensions	200 x 160 x 55.5mm
Weight	0.6 kg

PLAQUE

Professional robust design with separate power supply unit (driver) for installation with corresponding cofferdam which enables reliable management from the inside of the hull. White-color light control by using optional momentary switch or optional DMX512 interface MXU01 with built-in ASTEL protocol. Multi-color RGBW light control with dimming and changing of color of lighting manually or automatically through the complete rainbow spectrum by using optional momentary switch or optional DMX512 interface MXU01 with built-in ASTEL protocol.

Features

- Innovative Design
- High-Grade Aluminium or Stainless Steel
- Cofferdam with Aluminium Light Body
- 9 or 18 High-Power LEDs Design
- White or RGBW Multi-Color Lighting
- Tempered Glass Optical Window
- Vacuum Metalized Reflector
- Remote Control
- Digital Dimming
- DMX512 Network Control
- Polarity Protection
- Transient Protection
- Thermal Protection



Simply
the brightest.

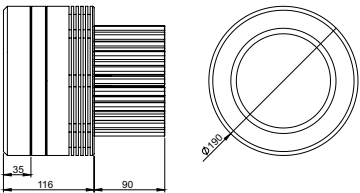


Color of lighting

W	white
MW	RGBW multi-color

PLAQUE MFM09200

Power requirement	1A (white), 3 x 1 A (RGB)
Lens Angle	50°
Optical window	15 mm tempered glass
Luminous flux	max. 14.000 lm (white)
White color temperature	6.000K – 10.000k
Operating temperature	-10°C – +50°C
Casing	Aluminium
Protection	IP 68
Dimensions	Ø 190 x 170 mm (without cofferdam)
Weight	4.8 kg (without cofferdam)



Power Supply Unit MPS91000

Input voltage	120-277 Vac, 50/60Hz
Consumption	120W (white), 100W (RGB)
Operating temperature	-10°C – +55°C
Casing	ABS
Protection	IP 56
Dimensions	300 x 220 x 120 mm
Weight	3 kg (white), 4 kg (RGB)

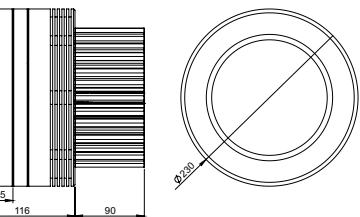


Color of lighting

W	white
MW	RGBW multi-color

PLAQUE MFM18300

Power requirement	2 x 1A (white), 3 x 1 A (RGB)
Lens Angle	50°
Optical window	15 mm tempered glass
Luminous flux	max. 28.000 lm (white)
White color temperature	6.000K – 10.000k
Operating temperature	-10°C – +50°C
Casing	Aluminium
Protection	IP 68
Dimensions	Ø 230 x 170 mm (without cofferdam)
Weight	7.1 kg (without cofferdam)



Power Supply Unit MPS181000

Input voltage	120-277 Vac, 50/60Hz
Consumption	240W (white), 200W (RGB)
Operating temperature	-10°C – +55°C
Casing	ABS
Protection	IP 56
Dimensions	380 x 300 x 120 mm
Weight	4 kg (white), 5 kg (RGB)



Underwater LED Dock Lights

CONVEX

Truncated cone surface-mount designed casings enable very simple installations to the piers, floating pontoons and docks. Single-color light control by using optional momentary switch or optional DMX512 interface MXU01 and PWM dimmer MDU13 with built-in ASTEL protocol.

Features

- Aluminium Bronze Casing
- 18 High-Power LEDs Design
- Cool White Lighting
- Tempered Glass Optical Window
- Wide Range Power Supply 100-240 Vac
- High-Efficiency Lens
- Polarity Protection
- Transient Protection
- Thermal Protection
- Low Power Consumption
- Simple Installation
- Digital Dimming (optional)
- DMX512 Network Control (optional)

Marina Punat
Krk Island, Croatia, Europe

Simply
the brightest.

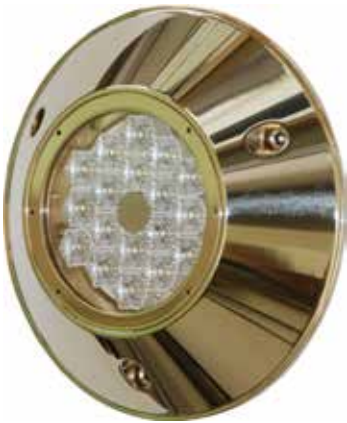
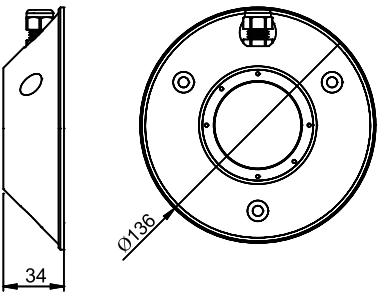


CONVEX MST18240 AB2WD

Lens Angle	50°
Optical window	6 mm depth tempered glass
Luminous flux	max. 16.000 lm
White color temperature	6.000K
Operating temperature	-10°C – +50°C
Casing	Aluminium Bronze (AB2)
Protection	IP 68
Dimensions	Ø 166 x 34 mm
Weight	2.7 kg

Power Supply Unit ELG-150-C2100B

Input voltage	100-240 Vac, 50/60 Hz
Consumption	max. 140W Adc
Operating temperature	-10°C – +55°C
Casing	Aluminium
Protection	IP 67
Dimensions	219 x 63 x 35.5 mm
Weight	1 kg

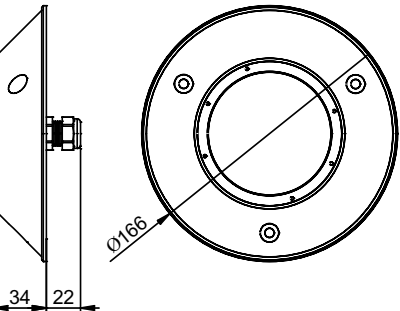


CONVEX MSR18240 AB2WD

Lens Angle	50°
Optical window	6 mm depth tempered glass
Luminous flux	max. 16.000 lm
White color temperature	6.000K
Operating temperature	-10°C – +50°C
Casing	Aluminium Bronze (AB2)
Protection	IP 68
Dimensions	Ø 166 x 34 mm
Weight	2.7 kg

Power Supply Unit ELG-150-C2100B

Input voltage	100-240 Vac, 50/60 Hz
Consumption	max. 140W Adc
Operating temperature	-10°C – +55°C
Casing	Aluminium
Protection	IP 67
Dimensions	219 x 63 x 35.5 mm
Weight	1 kg





MYW868B/CP
MYW868B/CP-31
MYW868B/CP-3
MYW868B/CP-41
MYW868B/CP-4
MYW868B/CP-51
MYW868B/CP-5
MYW868BE

Wireless Yacht Control Systems

MYW868B/CP

Patented RF microprocessor-based high-reliable wireless remote control system for motor yachts designed especially for controlling engines, thrusters and anchor windlass. By using the remote controller the skipper has control over his vessel from any spot on the yacht. High-quality switches and keys are used to control both engines, bow and stern thrusters as well as the anchor windlass during anchoring. The remote controller is encased in an ergonomically designed watertight housing ensuring simple operation and portability. Thanks to the carrying cord provided it can even be worn around the neck thus freeing the hands for other tasks during docking. The steering of the vessel is thus always at the skipper's fingertips in case of any corrections of the vessel's movement due to wind or other factors are required. During anchoring, complete control of the vessel is possible from the bow which allows the skipper to precisely determine the position of the anchor and avoid any underwater obstacles. During the weighing of the anchor, proper manoeuvring of the vessel is possible right from its bow, thus avoiding any overloads on the anchor windlass and possible entanglement with another anchor. Dangerous and unforeseeable situations, due to incorrect instructions from crew members, are thus effectively eliminated also during the procedure of tying a line onto a floating buoy. Thanks to the remote controller the skipper can manoeuvre the vessel to the buoy with pinpoint accuracy and secure the line without any assistance. Additional control unit MYW868BE can be supplied to connect the system to the special electronic control heads or to connect to the secondary electronic control head if the yacht is fitted with a fly-bridge.

Features

- High-Reliable Patented Design
- Port Engine Control
- Starboard Engine Control
- Anchor Windlass Control
- Bow Thruster Control
- Stern Thruster Control
- Transmit LED Indicator
- Low Battery LED Indicator
- ABS Casings with IP65 and IP67 Protection
- Low-Power Consumption
- Simple Connecting



When docking becomes a pleasure.

MYW868B/CP

Number of channels 6, 8 or 10
Transmission code 40 bit
Frequency 868 MHz

Transmitter

RF output power max. 10 mW
Power supply 3V lithium battery CR2
Operating temperature 0°C – +50°C
Casing ABS, IP65 protection
Dimensions (L x W x H) 150 x 60 x 34 mm
Weight (incl. battery) 0.2 kg

Receiver

Power requirement 12 – 24Vdc
Consumption max. 300mAdc
Operating temperature 0°C – +50°C
Casing ABS, IP65 Protection
Dimensions (L x W x H) 200 x 120 x 55 mm
Weight 0.5 kg

Number of control functions

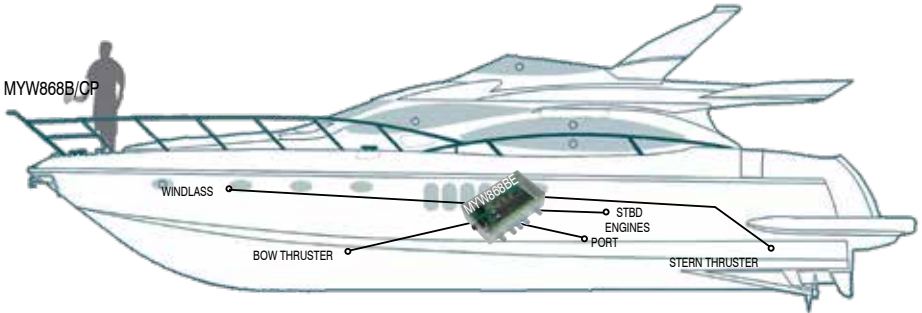
- | | |
|----|---|
| 31 | - 2-function control system
- 1 engine control
- anchor windlass control |
| 3 | - 3-function control system
- port/starboard engine control
- anchor windlass control |
| 41 | - 3-function control system
- 1 engine control
- bow thruster control
- anchor windlass control |
| 4 | - 4-function control system
- port/starboard engine control
- bow thruster control
- anchor windlass control |
| 51 | - 4-function control system
- 1 engine control
- bow thruster control
- stern thruster control
- anchor windlass control |
| 5 | - 5-function control system
- port/starboard engine control
- bow thruster control
- stern thruster control
- anchor windlass control |

MYW868BE

Power requirement 12 – 24Vdc
Consumption max. 300 mAdc
Operating temperature 0°C - +50°C
Casing ABS, IP65 protection
Dimensions (L x W x H) 160 x 100 x 55 mm
Weight 0.3 kg

- Multi-Control Relay Outputs
- LED indicators
- Wide Range Power Supply
- Low Power Consumption
- ABS Casings with IP65 Protection

PATENTED





Synchronization Unit MSU08
PWM Dimmer MDU13
DMX512 Interface MXU01
Isolation Board IB01
Cofferdam CD01

Accessories

Synchronization Unit

Synchronization of color of lighting for complete group of multi-color lights when automatical changing of color of lighting through the complete rainbow spectrum is selected and controlled by using optional momentary switch.

Features

- 8 Synchronization Outputs
- Wide Range Power Supply
- Low Power Consumption
- Polarity Protection
- Transient Protection
- Short Circuit Output Protection
- Simple Installation

PWM Dimmer

Dimming of single-color lights or group of lights by using optional momentary switch. Three-color light control with dimming and changing of color of lighting manually or automatically through the complete rainbow spectrum by using optional momentary switch. Built-in ASTEL protocol to control single-color lights or three-color lights by using optional DMX512 interface MXU01 or MXU03.

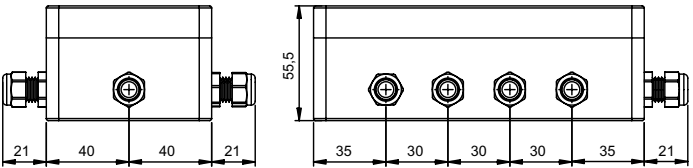
Features

- 3 Control Outputs
- Adjustable PWM Frequency
- Wide Range Power Supply
- Low Power Consumption
- Polarity Protection
- Transient Protection
- Short Circuit Output Protection
- Simple Installation



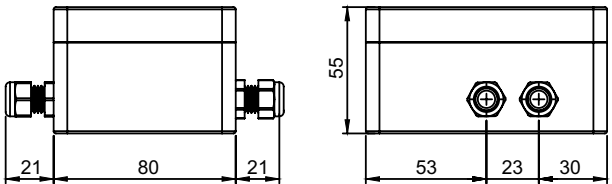
Synchronization Unit MSU08

Input voltage	12-24 Vdc
Consumption	max. 10 mAdc
Operating temperature	-10°C - +50°C
Casing	ABS
Protection	IP 65
Dimensions	max. 181x122x55.5mm
Weight	0.3 kg



PWM Dimmer MDU13

Input voltage	12-24 Vdc
Consumption	max. 10 mAdc
ASTEL protocol default address	1
Operating temperature	-10°C - +50°C
Casing	ABS
Protection	IP 65
Dimensions	max. 106x122x55.5mm
Weight	0.2 kg



DMX512 Interface

DMX512 to ASTEL protocol multi-light converter to control multi-color light or one group of multi-color lights with built-in ASTEL protocol or to control single-color light or one group of single-color lights by the help of PWM Dimmer MDU13 with built-in ASTEL protocol.

Features

- 1 Control Output
- DIP-switch Programmable
- Multi - Speed Mode
- Wide Range Power Supply
- Low Power Consumption
- Polarity Protection
- Transient Protection
- Short Circuit Output Protection
- Simple Installation

Isolation Board

To protect the Underwater LED Lights against galvanic corrosion where the underwater lights are installed on steel or aluminium hull.

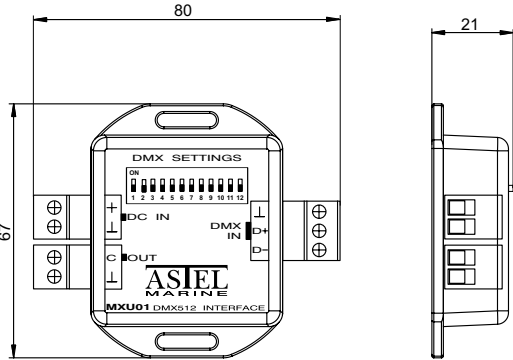
Cofferdam

To install the Superyacht Underwater LED Lights. Enables reliable installation and maintenance. Made of material as specially requested.



DMX512 Interface MXU01

Input voltage	12-24 Vdc
Consumption	max. 50 mAdc
Operating temperature	-10°C - + 50°C
Casing	ABS
Dimensions	max. 67x80x21mm
Weight	0.1 kg



Isolation Board IB01

Thickness	1 mm
Material	polycarbonate

Underwater Light series

EQ06	for Equator MSR0640 series
EQ12	for Equator MSR1280 series
EQ36	for Equator MSR36240 series
CU06	for Conus MST0680 and MSR0680 series
CU18	for Conus MST18240 and MSR18240 series
CX06	for Convex MST0680 and MSR0680 series
CX18	for Convex MST18240 and MSR18240 series
PQ06	for Plaque MFM0680 series
PQ18	for Plaque MFM18240 series

Superyacht Underwater Light series

EQ36P	for Equator MSR36240P series
-------	------------------------------

Cofferdam CD01

Superyacht underwater light series

EQ36S	for Equator MSR36240S series
CX18S	for Convex MTH18240S series
CX09P	for Convex MSR09150 series
CX18P	for Convex MSR18300 series
PQ09P	for Plaque MFM09150 series
PQ18P	for Plaque MFM18300 series



Simply
the
brightest.



Astel Marine is registered trademark of ASTEL d.o.o..

All other trademarks not owned by ASTEL d.o.o. are the property of their respective owners.

Due to continuous product improvement all specifications and design are subject to change without notice.

© 2023 ASTEL d.o.o.



ASTEL d.o.o.
Dutovlje 138
6221 Dutovlje
Slovenia

www.astel-marine.com